

PRESENTATION OF THE LYCEE FRANCAIS INTERNATIONAL OF VIENTIANE JOSUE-HOFFET 2024-2025



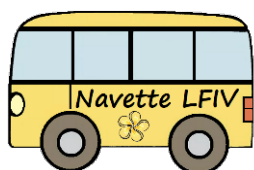
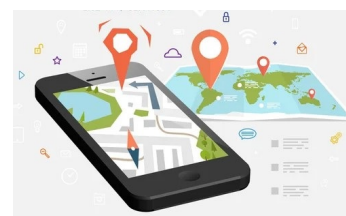
Our school, approved by the French Ministry of Education and under agreement with the Agency for French Education Abroad (AEFE), guarantees the quality of the programmes taught and their conformity with the pedagogical objectives and the fundamental principles of public education in France.

Below you will find some information that may be useful to you:

1. Location

The LFIV consists of two sites:

- Primary school at Thadeua (Maternelle and Elementary):
[Link_LFIV_Geolocalisation_Primary_Campus](#)
- Secondary school at Hadxaykhao :
- [Link_LFIV_Geolocalisation_Secondary_Campus](#)



Shuttles are operated between the two sites: in the morning from Thadeua to Hadxaykhao and in the evening from Hadxaykhao to Thadeua (no other stop is available).

2. Website / social networks

Our Website: <https://www.lyceehoffet.org>

Facebook: <https://www.facebook.com/LFIVientiane>

Instagram: [lfivientiane](#)



On the LFIV Website, you will find in [Link_LFIV_Website_Practical_Information](#):



- LFIV calendar for the current year,
- Primary and Secondary school Internal Rules,
- Primary and Secondary school canteen rules and menus,
- Primary school opening hours...

3. Registration

The registration procedure is directly carried out on our online software SKOLENGO:

[Link_LFIV_SKOLENGO](#) (available only for Secondary school)

The secretariat remains at your disposal to help you with these procedures.

All information is available on the LFIV Website:

[Link_LFIV_Website_Registrations](#)

- Registration procedures,
- Financial regulations,
- COVID measures,
- Scholarships,
- As well as various tutorials on the parent portal SKOLENGO.



INSCRIVEZ-VOUS
ສົ່ງທະບຽນໄດ້
ENROLL NOW

For the 2024-2025 school year, children born before December 31st, 2021, are eligible to enroll in our school.

Once your application has been finalised, it will be submitted to the Board for approval.

Level tests may be offered to non-French-speaking children.

When approved, we will send you an email requesting payment of the admission fee to confirm your child's registration.



4. Languages

We would like to inform you that the Lao language is integrated into the curriculum from the first year of school and English from the third year.

5. School hours

The school hours at Primary school at Thadeua, (Maternelle and Elementary) are shown below, with reception from 7.30am every day:

	Maternelle		Elementary	
Monday	8h00 - 11h30	13h30 - 15h30	8h00 - 11h30	13h00 - 15h00
Tuesday	8h00 - 11h30	13h30 - 15h30	8h00 - 11h30	13h00 - 15h00
Wednesday	8h00 - 12h00		8h00 - 12h00	
Thursday	8h00 - 11h30	13h30 - 15h30	8h00 - 11h30	13h00 - 15h00
Friday	8h00 - 11h30	13h30 - 15h30	8h00 - 11h30	13h00 - 15h00



Childcare service

	Maternelle	Elementary
Monday	15h30 - 16h20	15h00 - 15h30
Tuesday	15h30 - 16h20	15h00 - 15h30
Wednesday	12h00 - 12h30	12h00 - 12h30
Thursday	15h30 - 16h20	15h00 - 15h30
Friday	15h30 - 16h20	15h00 - 15h30

Childcare service, is included in the school fees, is provided every day.



6. School canteen



School catering is provided by an external service provider who is responsible for invoicing and payment (in addition to the school fees).

Pupils have the possibility to eat all week either outside the school or at the school catering service.

As indication, for the school year 2023-2024, the prices per child and per meal are for:

- Maternelle : 2,50 USD,
- Elementary : 3,00 USD,
- Secondary School : 3,50 USD.



7. Extracurricular activities

Extracurricular activities are organised for pupils every semester.

The programme is available on the LFIV Website: [Lien_LFIV_Website_Extracurricular_Activities](#)

Contact : periscolaire@lfiv.org

8. School fees

As an indication, the fees for the school year 2024-2025 are available here:

[Link_LFIV_School_Fees_2024_2025](#)

The cost of tuition is determined according to the child's nationality as declared at the time of registration.

Tuition fees are payable in 1 or 3 instalments (without surcharge or penalty) for a school year starts in **September**.

Please note that the admission fee of 900 USD per pupil is payable in full when your child registers at our school.

This fee guarantees that the pupil will be integrated into the school or, if necessary, placed on a waiting list.

The primary school covers the cost of school supplies, with the exception of a few special requests from the teacher.

At secondary level, textbooks are loaned to pupils, and supplies, which are the responsibility of families, will be available for purchase from a service provider.

9. Contact



For any questions regarding the **Elementary and Maternelle**, please contact the secretariat at Primary school by:

- telephone : +856 21 260 926 ou WhatsApp : +856 20 5472 9209
- email address : secretariat.primaire@lfiv.org

For any questions regarding the **Secondary school**, please contact the secretariat by:

- telephone : +856 21 227 227
- email address: secretariat@lfiv.org